

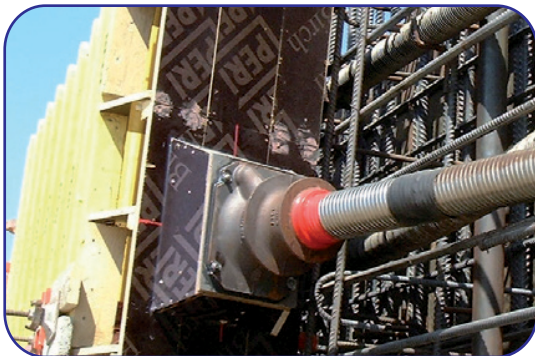


Heat Shrink Coupler is a Tubing used for jointing the post-tensioning ducts to ensure leak tightness of connections between two consecutive portion of duct.

These tubes are manufactured from high quality Cross-linked Polyolefin material. Hot melt adhesive lining provides 100% sealing according to IP 68 (Ingress Protection). Heat Shrink Couplers ensure a tight seal around the pre-stressing duct connections.

Features & Benefits:

- Easy & Quick Installation. No special skill required.
- High resistance to Impact & Abrasion.
- Suitable for Wet and Dry underground conditions.
- Joint in-line with pipe.
- Superior elastomeric characteristics allows better conformance over irregular contours.
- High Shrink ratio (3:1) helps to reduce the stock requirements with few sizes covering greater pipe application range.
- Resistant to Heat, UV rays, Vibration, Sand-blasting & Harsh Industrial conditions.
- Customized dimensions, length & colour available.



Technical Specification

PROPERTIES	VALUE	STANDARD
Physical		
Tensile Strength	20 Mpa (N/mm ²) (min.)	ASTM D638
Ultimate Elongation	350 % (min)	ASTM D638
Longitudinal Change	-10% (max.)	ASTM D2671
Hardness	45 ±10 Shore D	ASTM D2240
Water absorption	0.5 % (max.)	ASTM D570
Thermal		
Accelerated ageing	(120°C for 500 hrs)	ASTM D2671
Tensile Strength	14 Mpa (N/mm ²) (min.)	ASTM D638
Ultimate Elongation	300 % (min.)	ASTM D638
Low Temperature Flexibility (-40°C for 4 hrs.)	No Cracking	ASTM D2671
Heat Shock (250°C for 30 min.)	No cracking or flowing	ESI 09-11
Shrink Temperature	125°C	IEC 216
Continuous Temperature Limit	-40 to +110°C	IEC 216
Electrical		
Dielectric Strength	12 KV/mm.(min)	ASTM D149
Volume Resistivity	1 x 10 ¹⁴ Ohm.cm (min)	ASTM D257
Dielectric constant	5 (max.)	ASTM D150

Selection Chart

Code	D min (mm)	d max (mm)	T±10% (mm)	Length/Pc. (mm)
GCMW 70/22	70	22	2.7	300
GCMW 90/28	90	28	3.0	300
GCMW 105/30	105	30	3.0	300
GCMW 115/34	115	34	3.2	300
GCMW 130/36	130	36	3.2	300
GCMW 140/42	140	42	3.2	300
GCMW 160/50	160	50	3.3	300
GCMW 180/55	180	55	3.3	300
GCMW 200/60	200	60	3.5	300
GCMW 250/70	250	70	3.5	300
GCMW 320/90	320	90	3.5	300
GCMW 375/110	375	110	3.5	300
GCMW 425/125	425	125	3.5	300
GCMW 550/157	550	157	3.5	300
GCMW 680/200	680	200	3.5	300
GCMW 760/215	760	215	3.5	300
GCMW 863/250	863	250	3.5	300